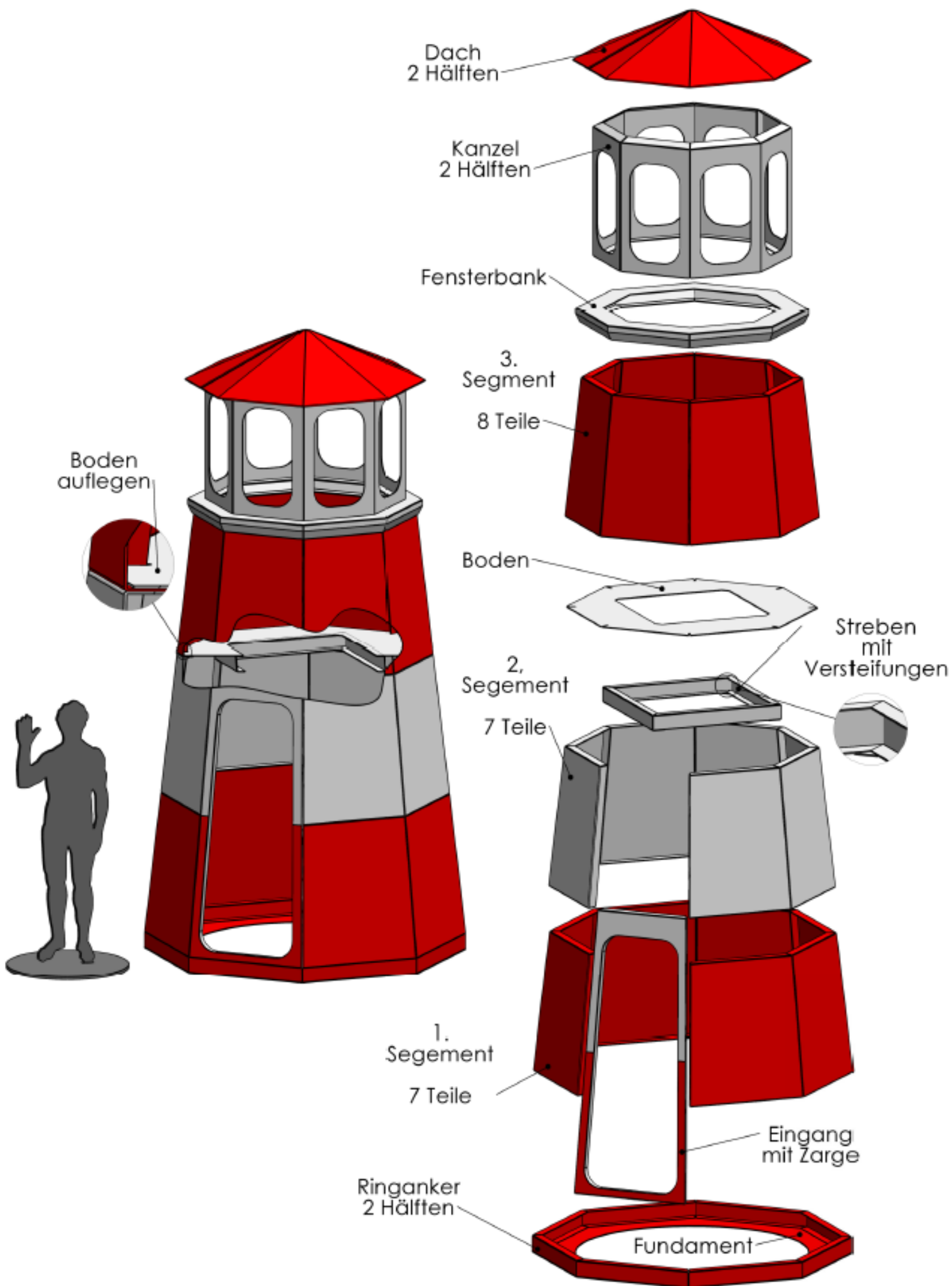


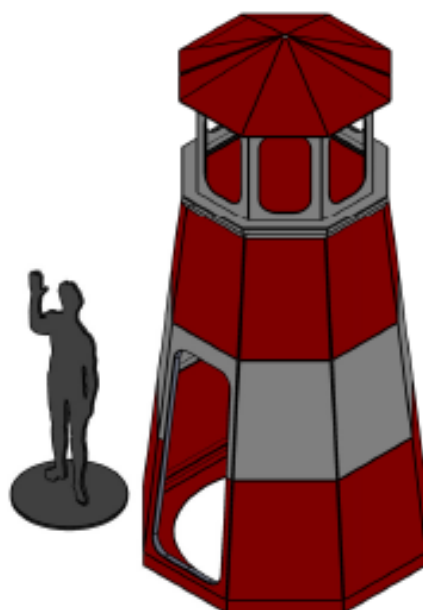
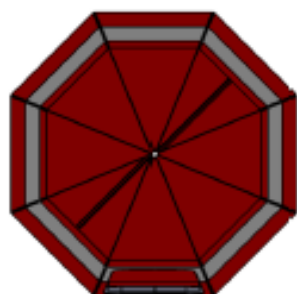
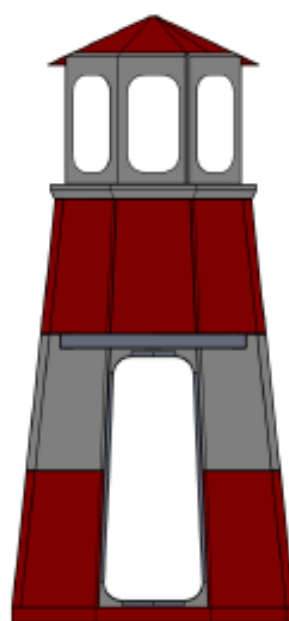
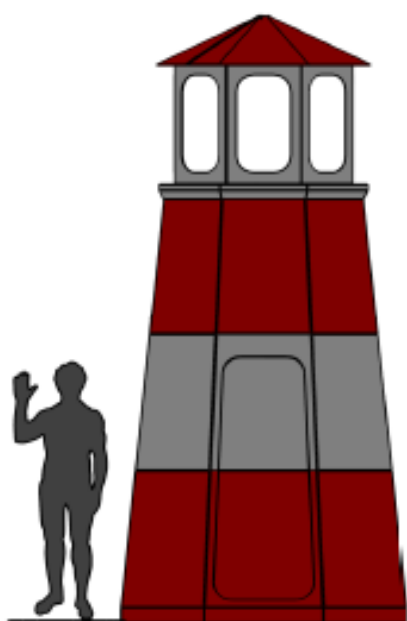
Leuchtturm 735,1

Maßstab 1:10

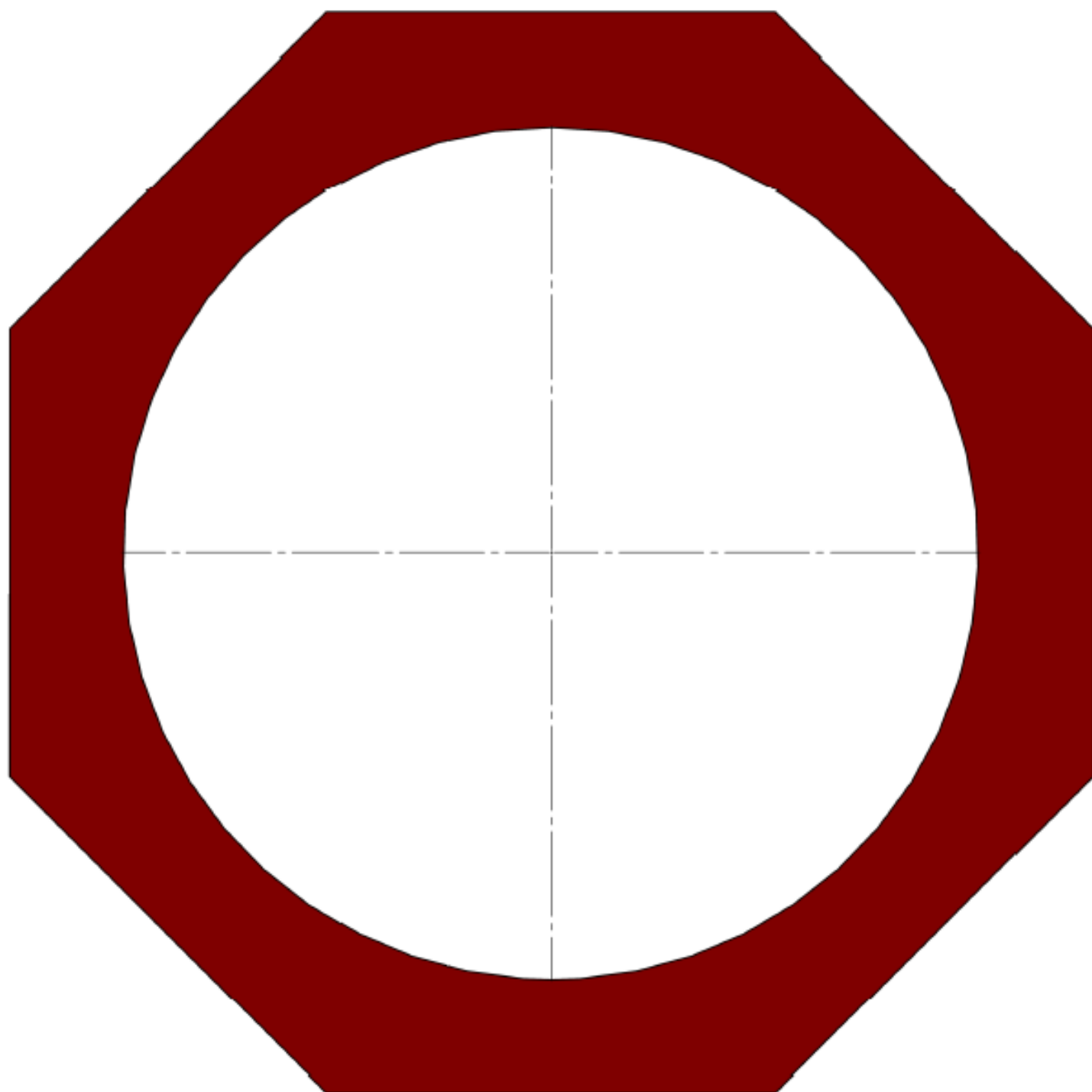




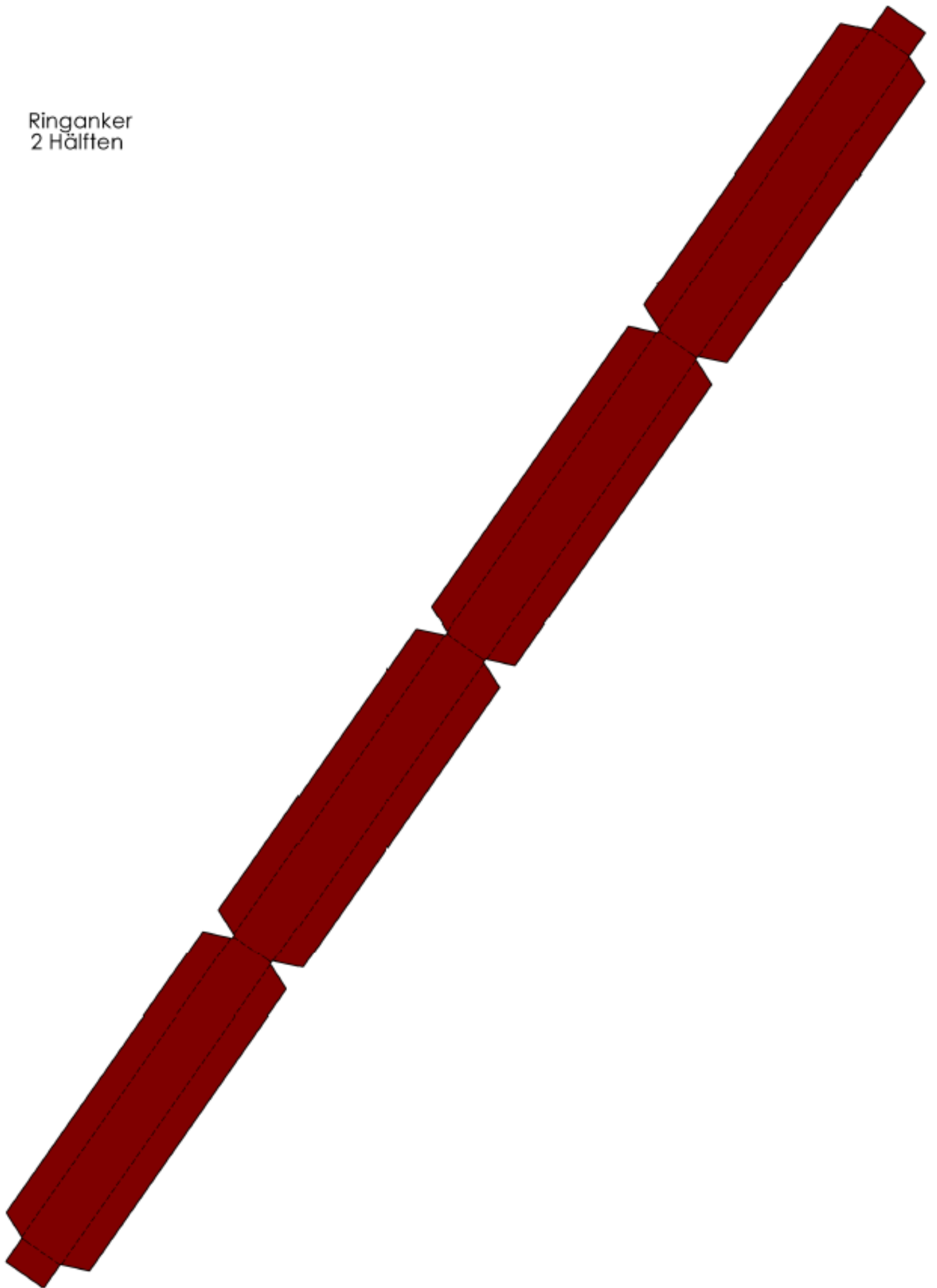
Schnitt

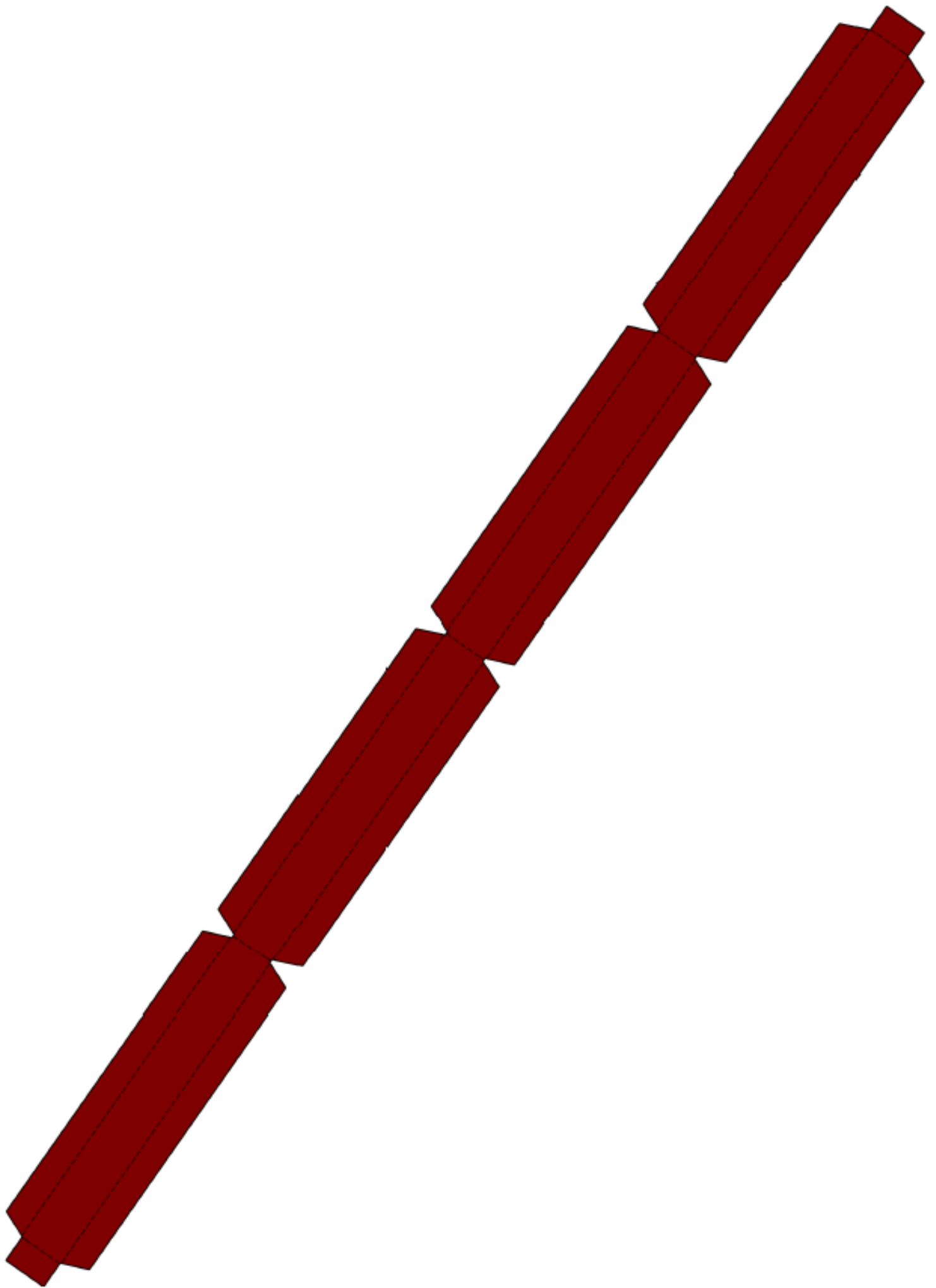


Fundament



Ringanker
2 Hälften



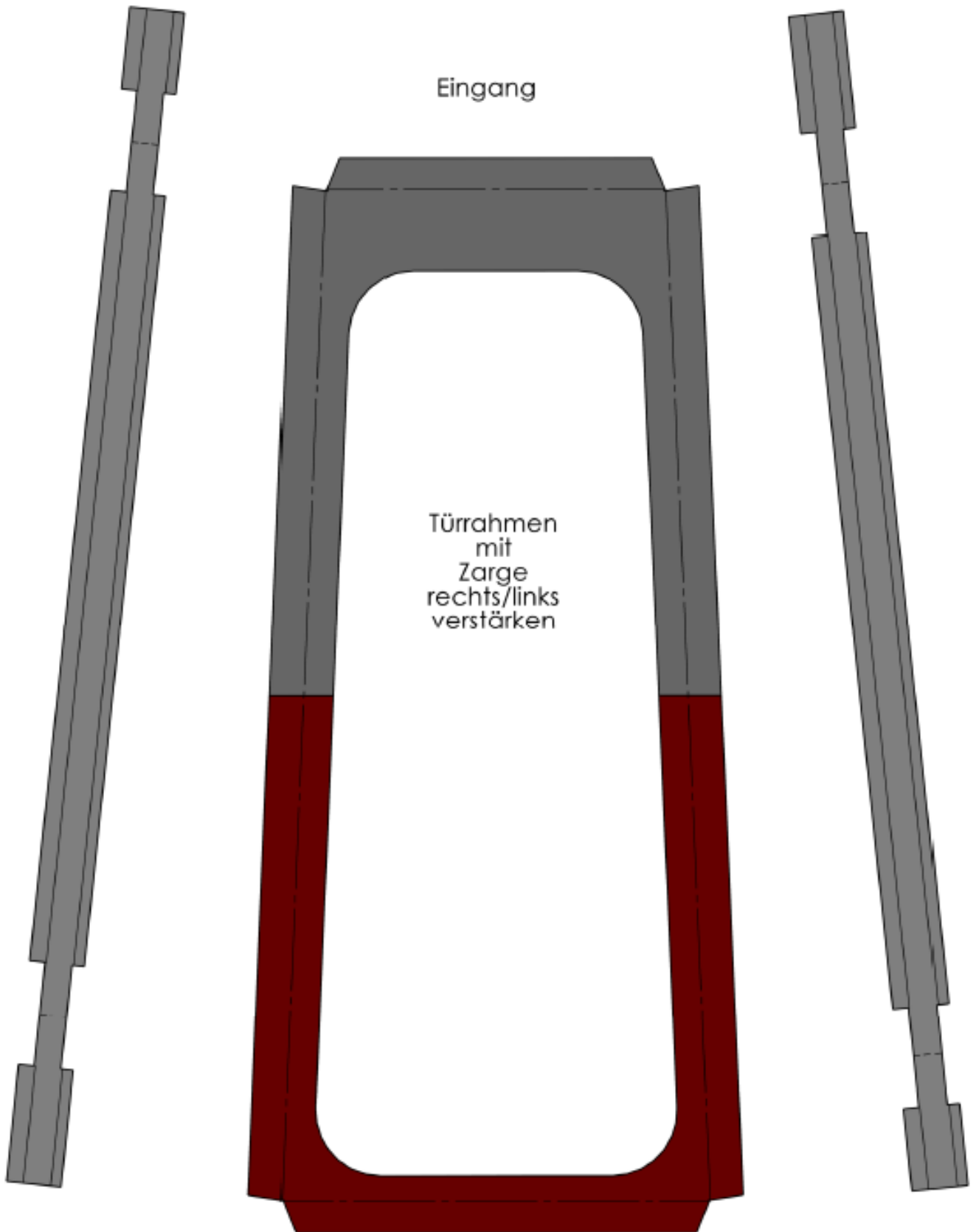


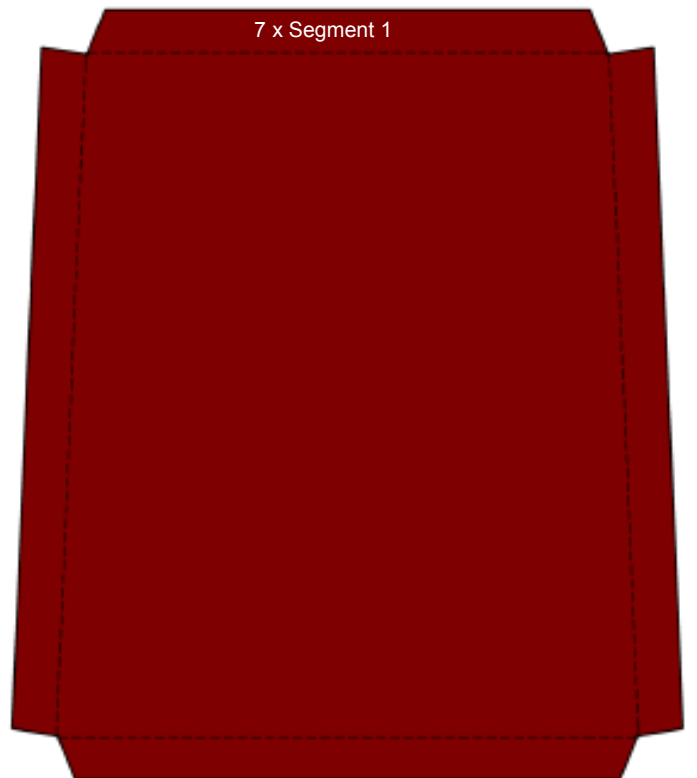
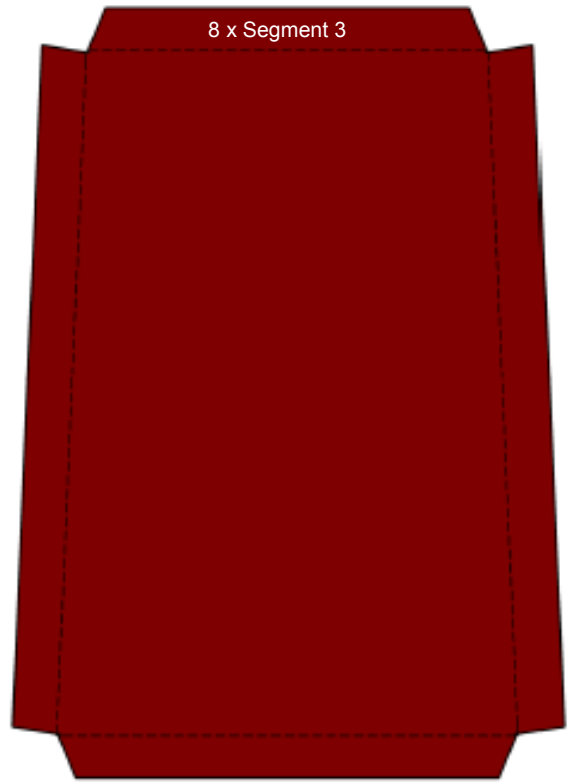
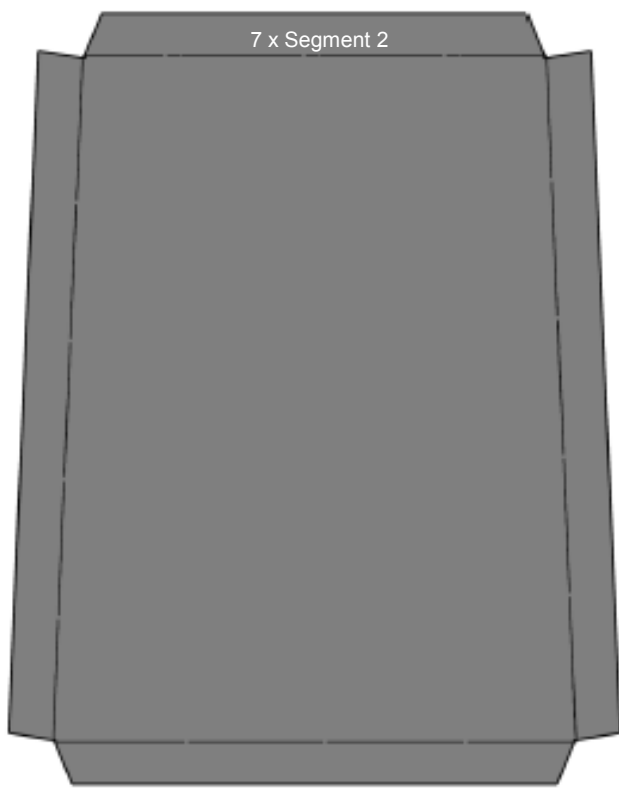
Zarge links

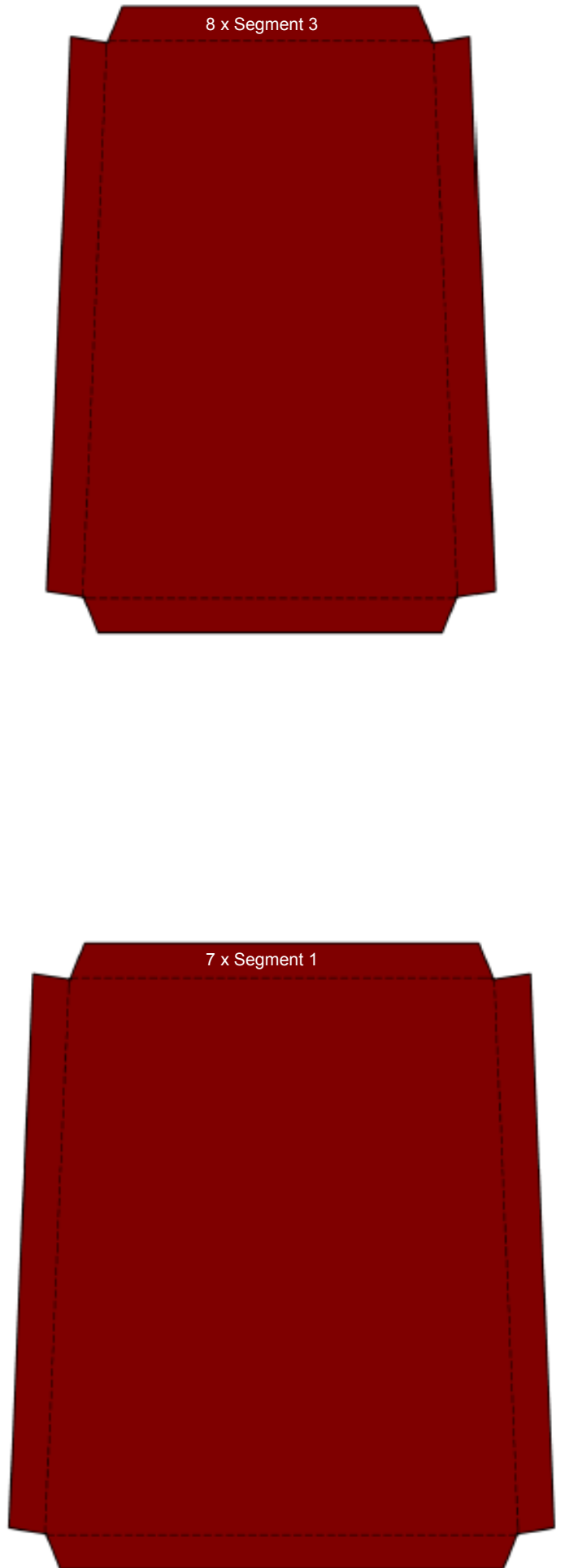
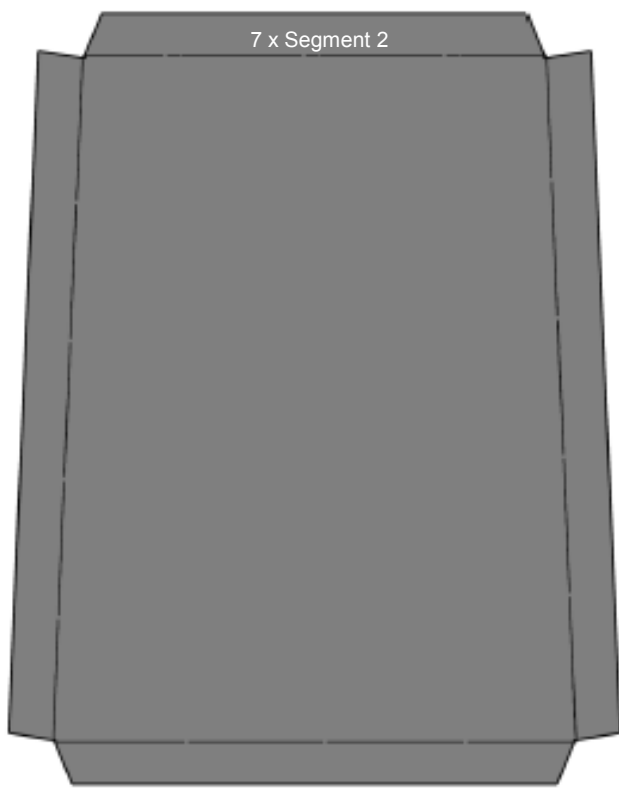
Zarge rechts

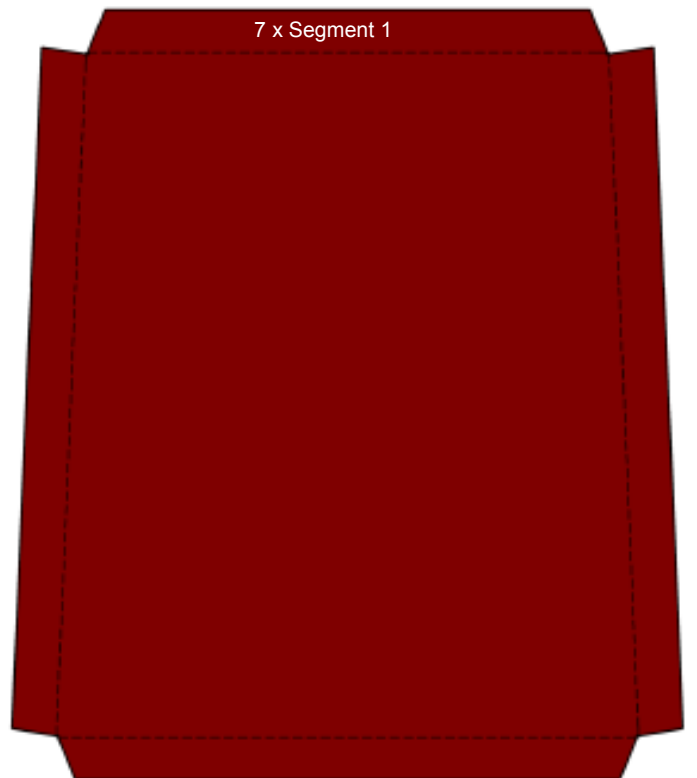
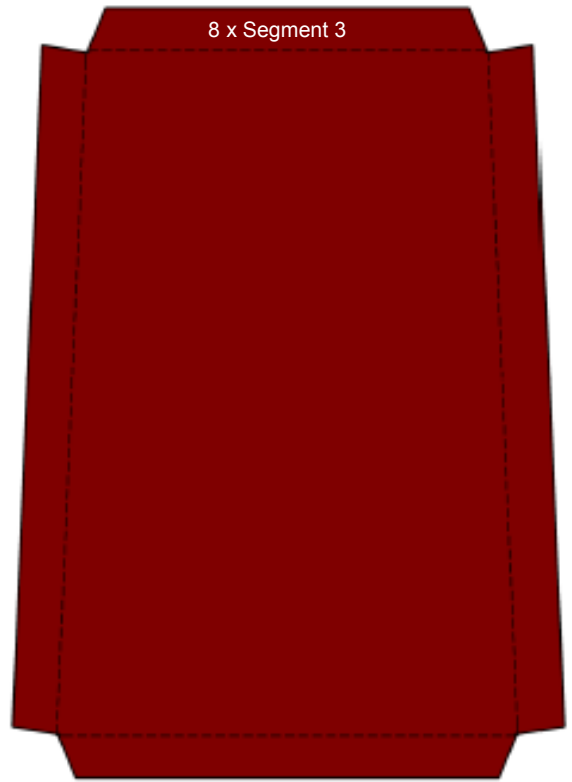
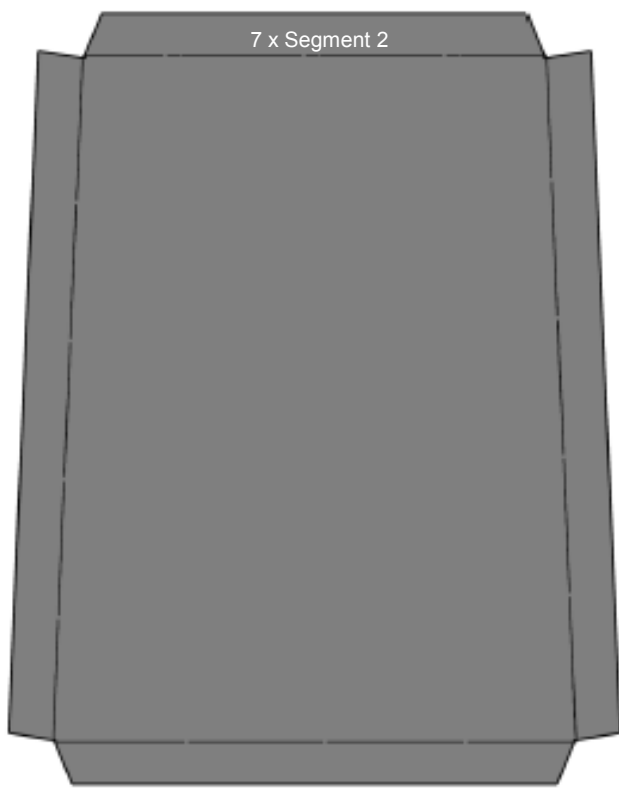
Eingang

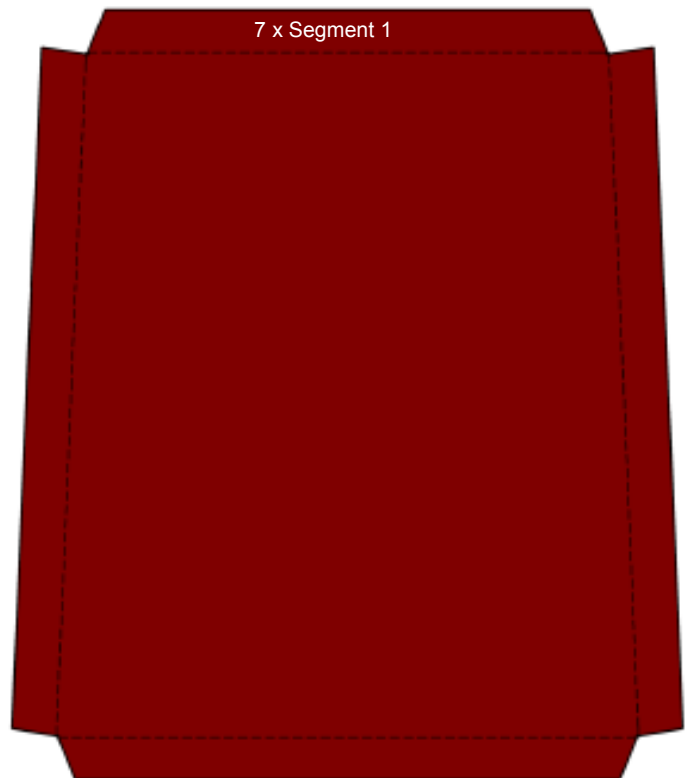
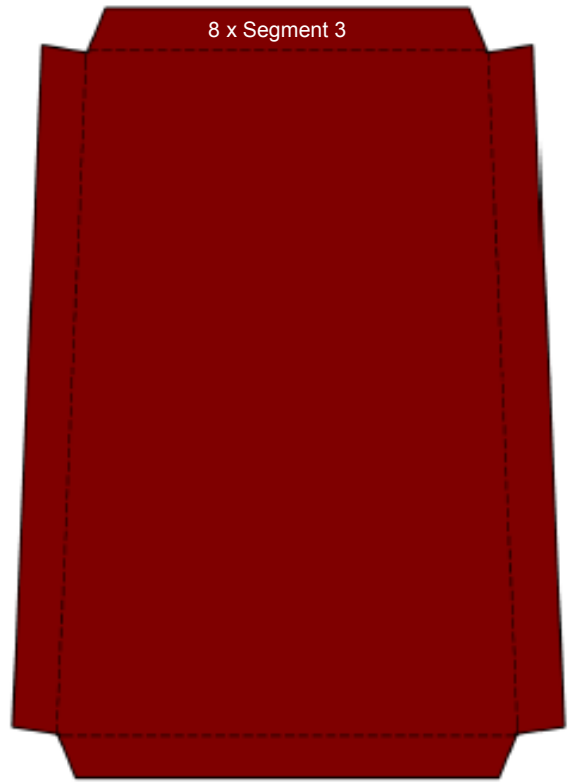
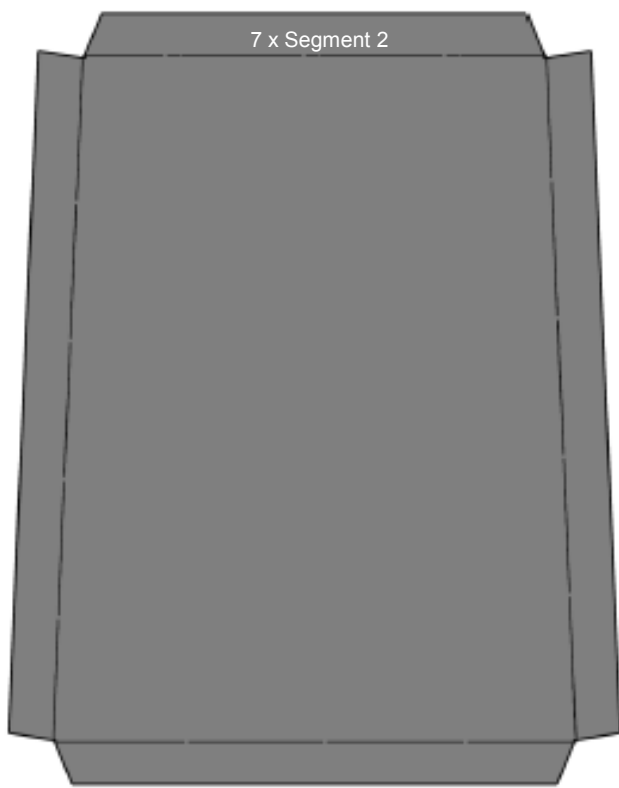
Türrahmen
mit
Zarge
rechts/links
verstärken

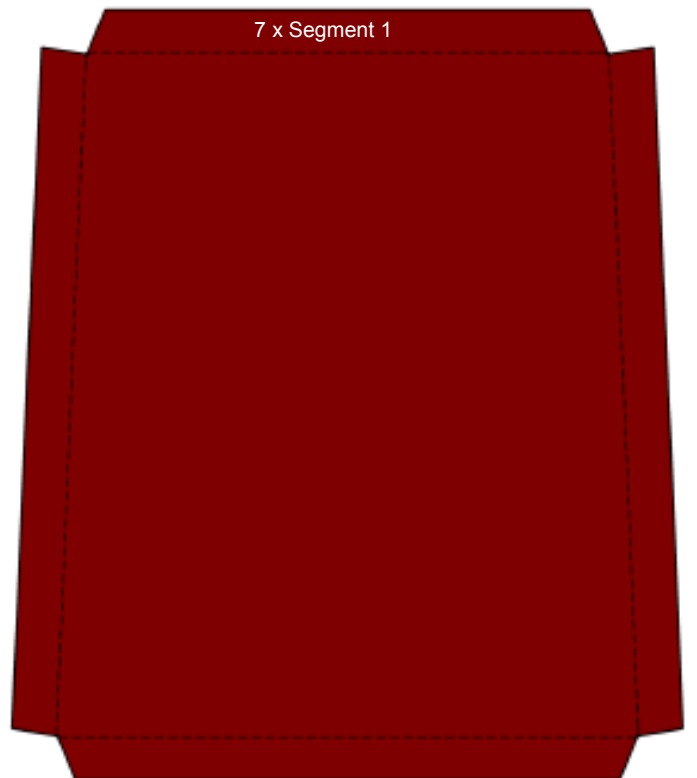
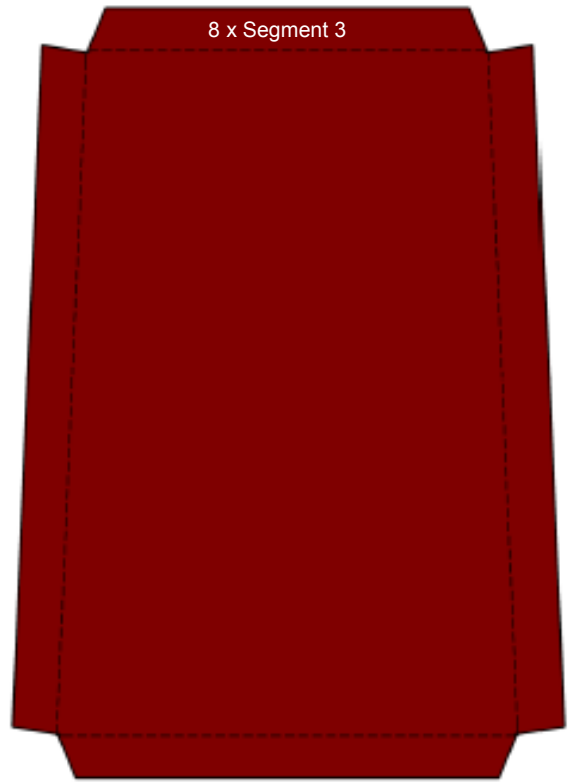
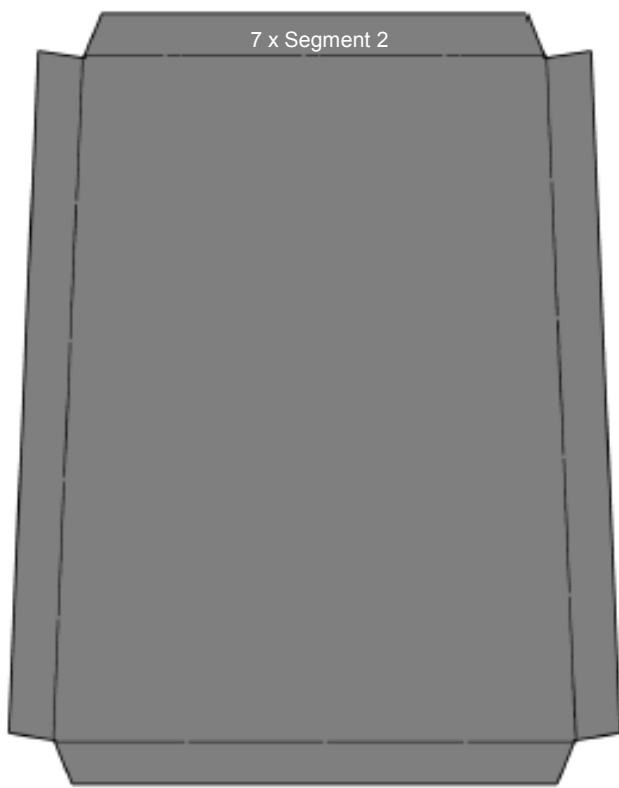


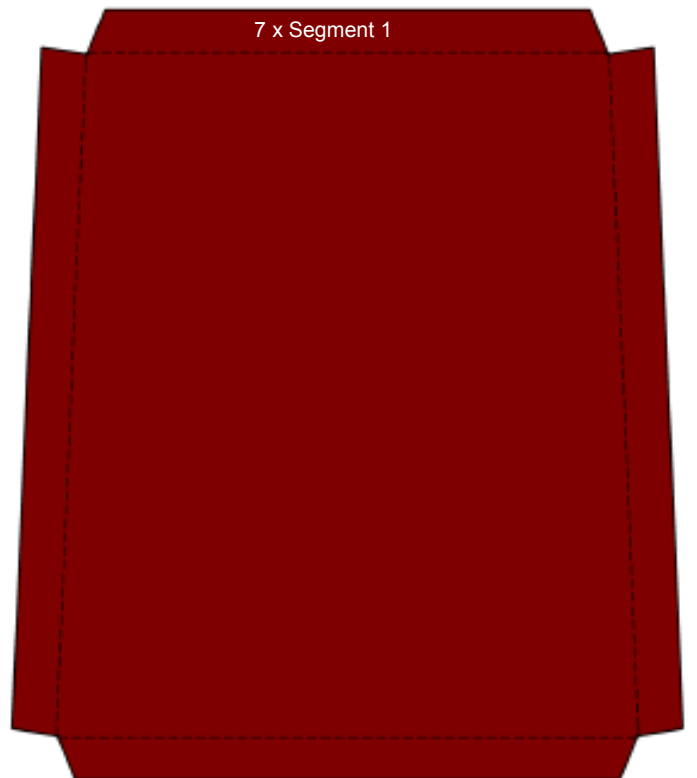
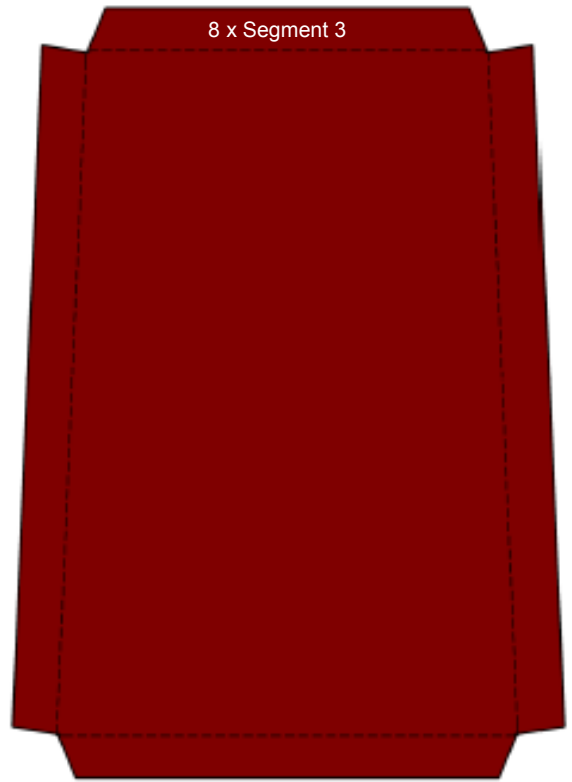
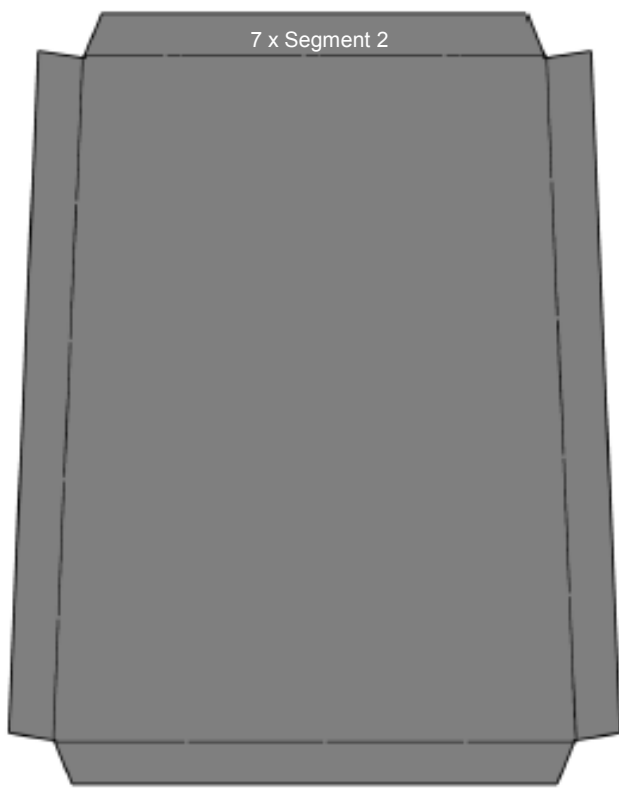


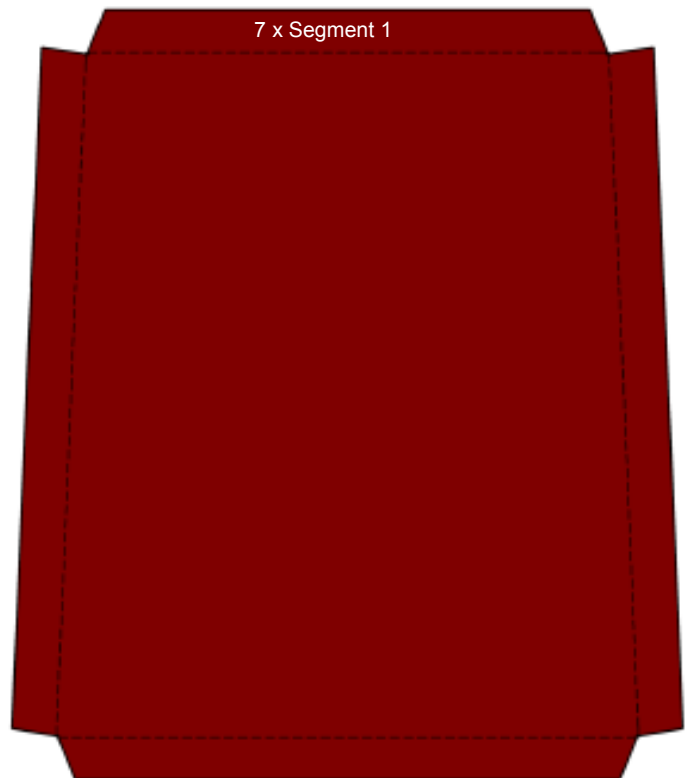
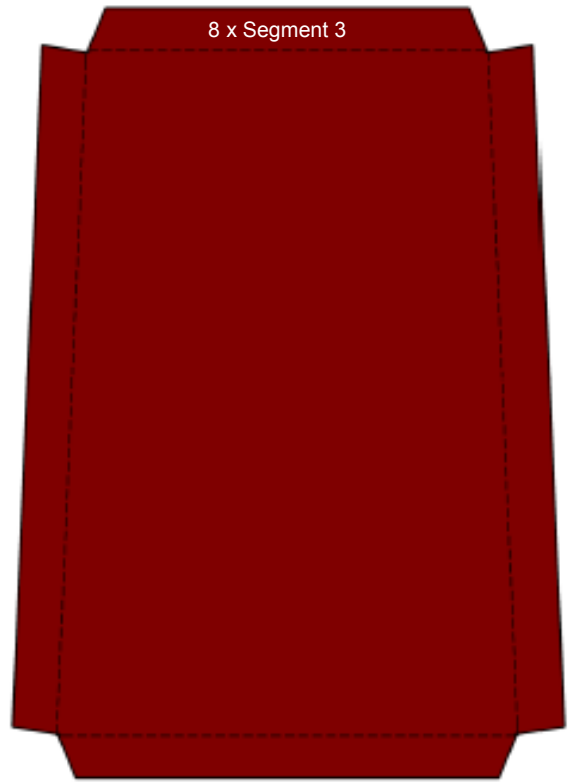
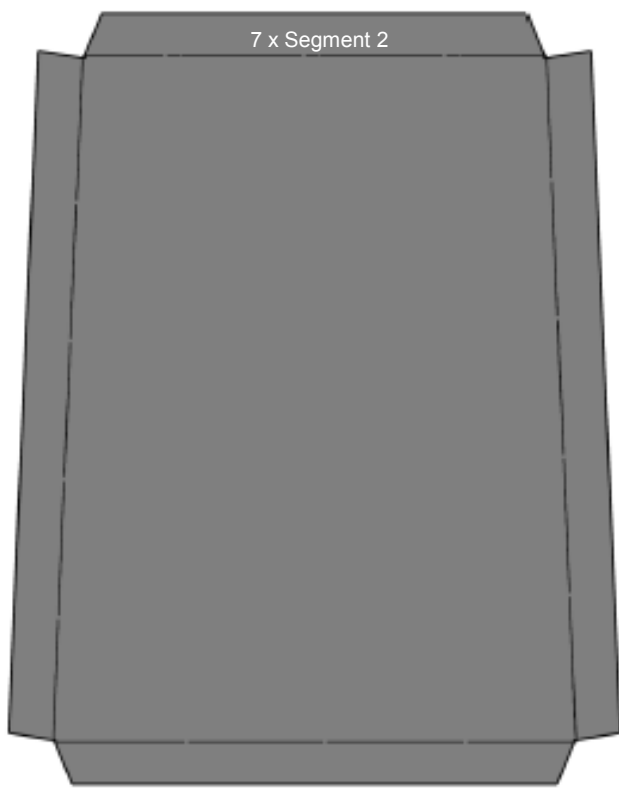


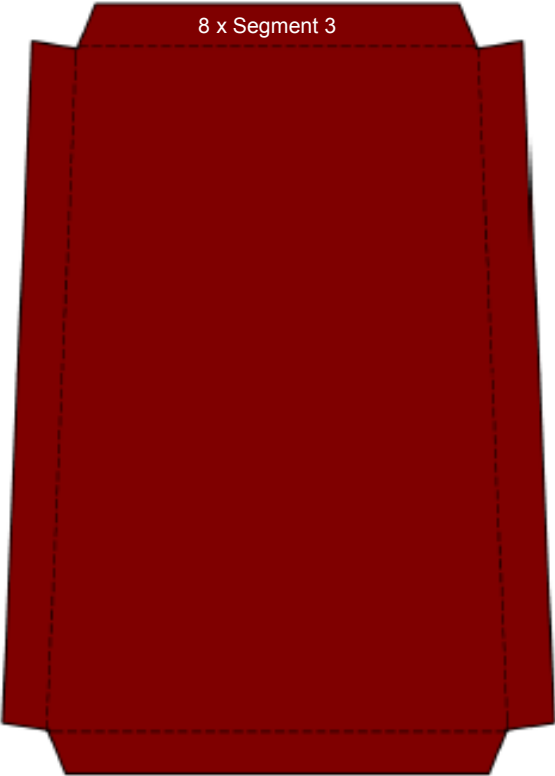




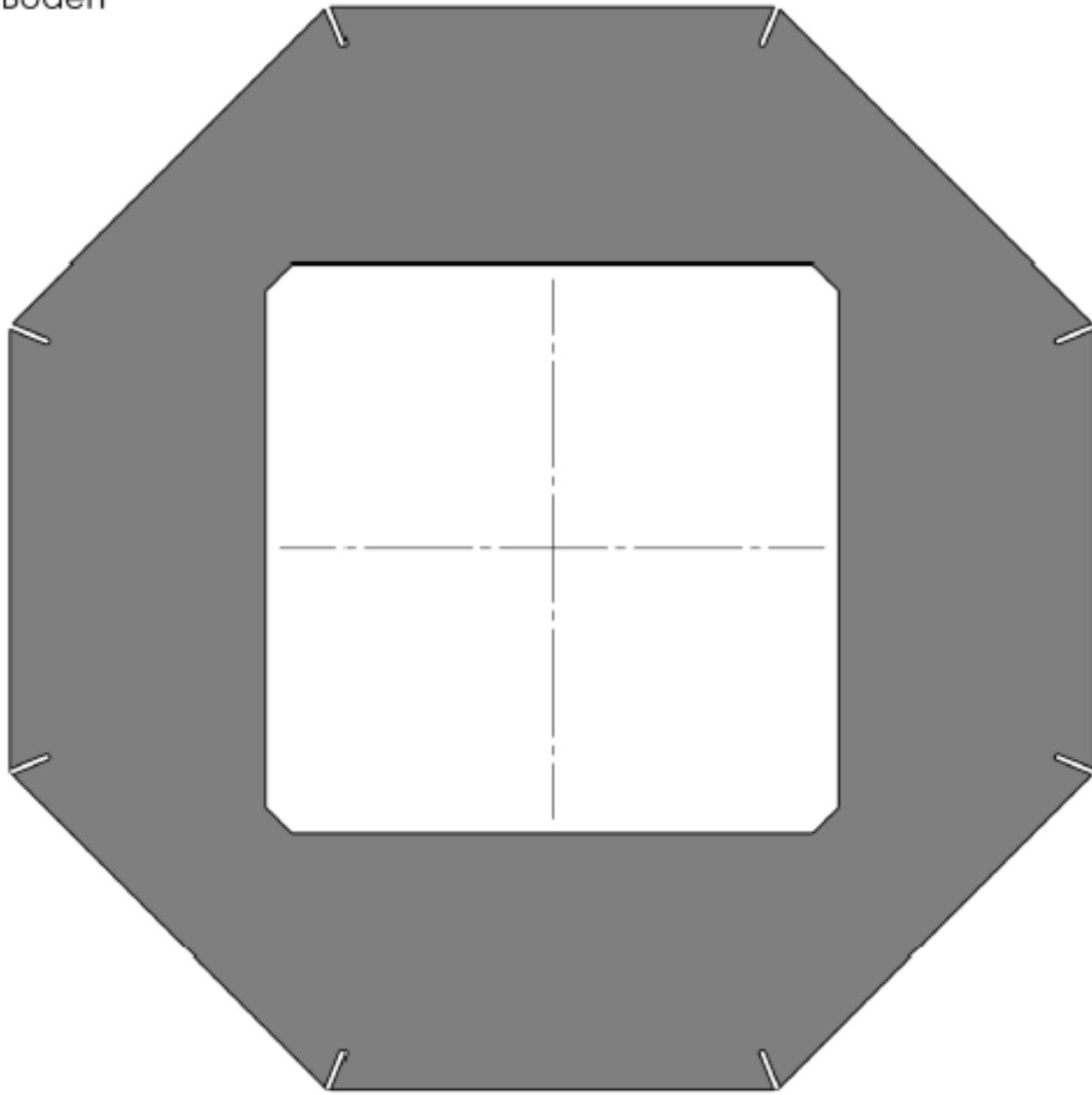




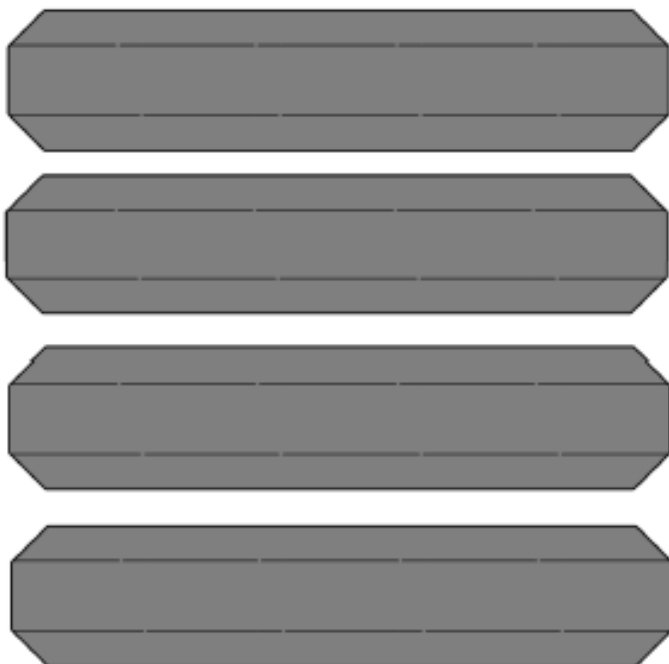




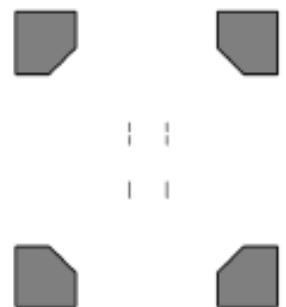
Boden



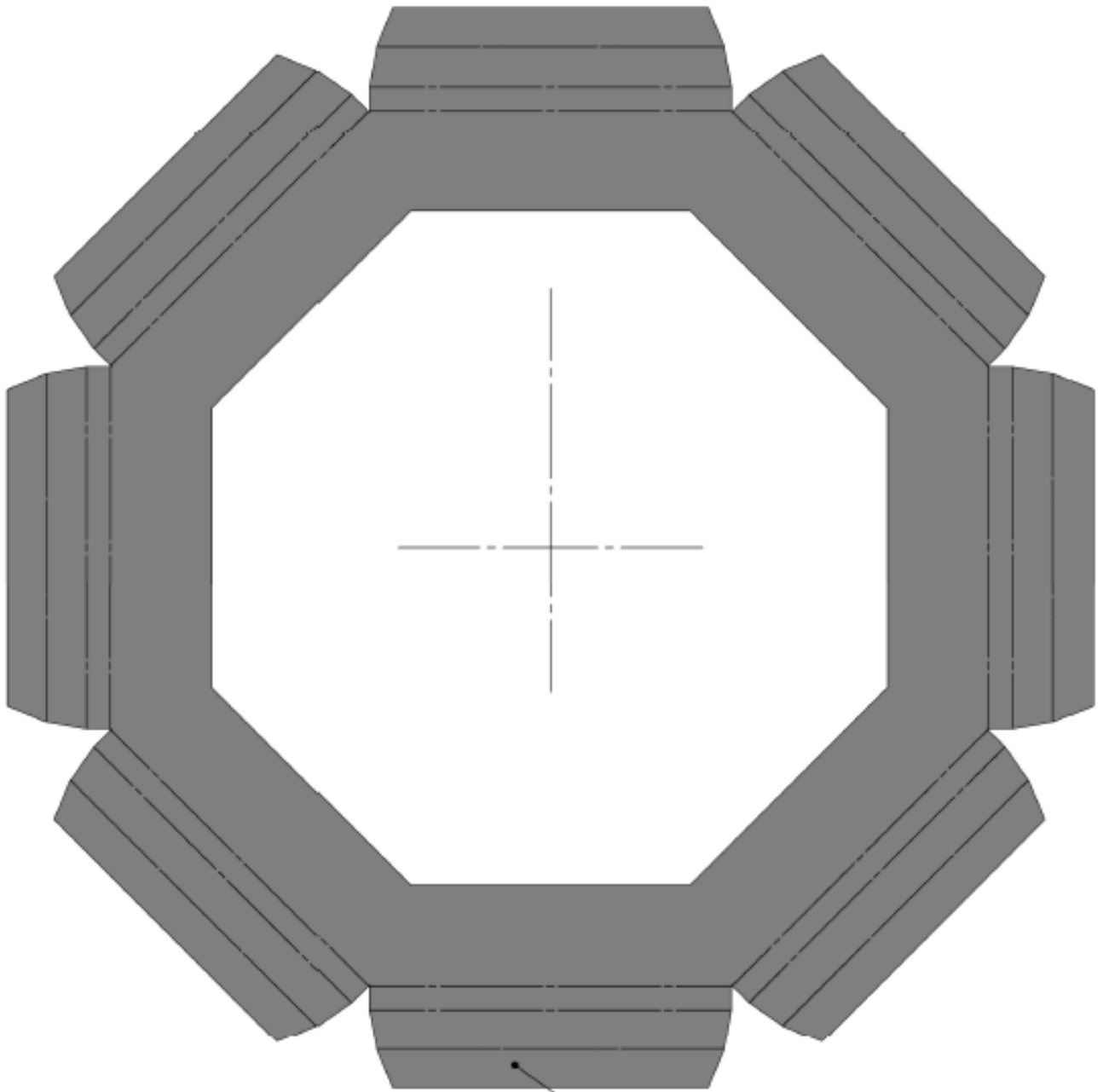
Streben



Knotenbleche

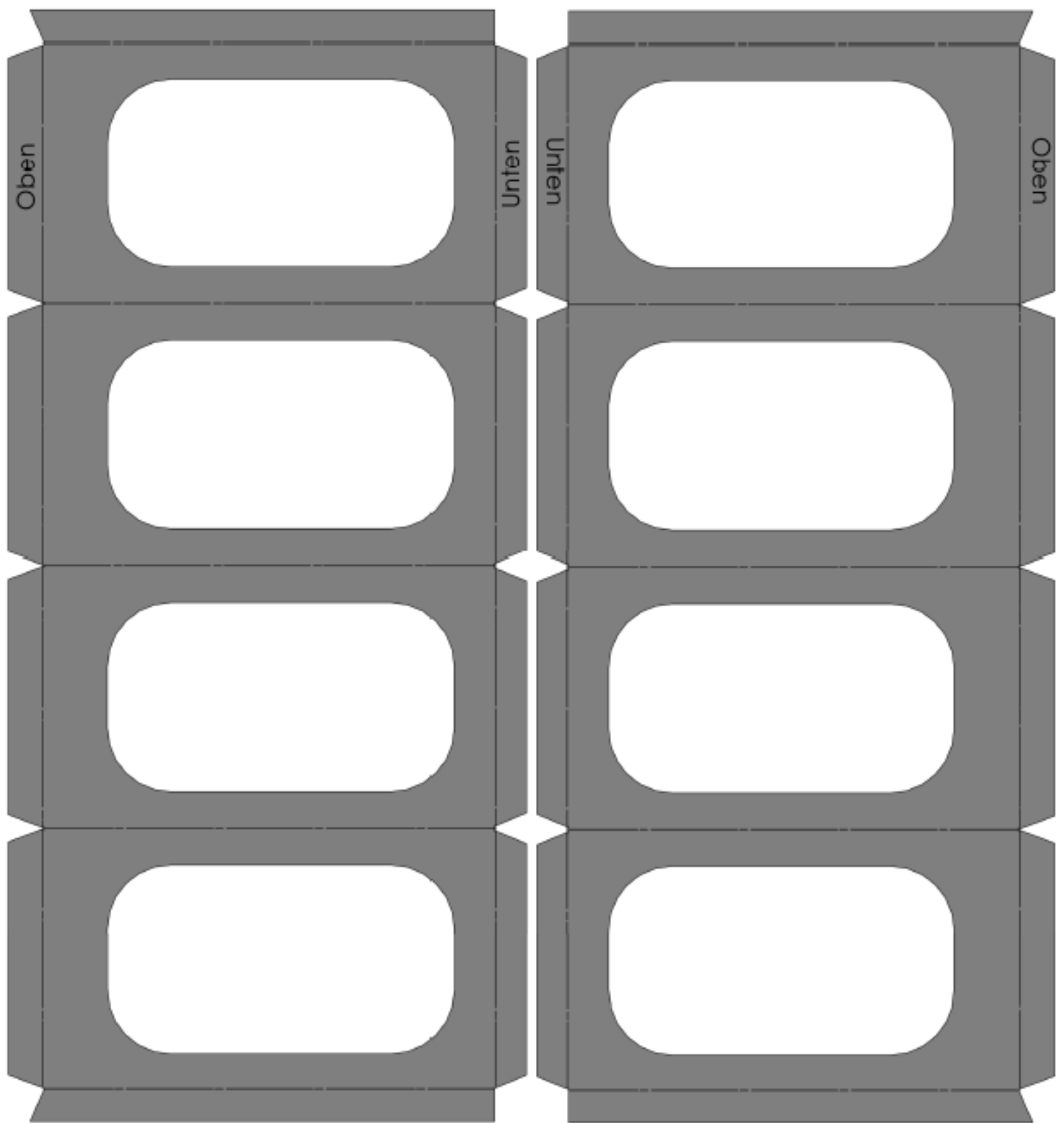


Fensterbank



Hier mit Segment 3
zusammenfügen

Kanzel
2 Hälften



Dach
2 Hälften

Kanten
nach innen falten

Überlappung

Überlappung

